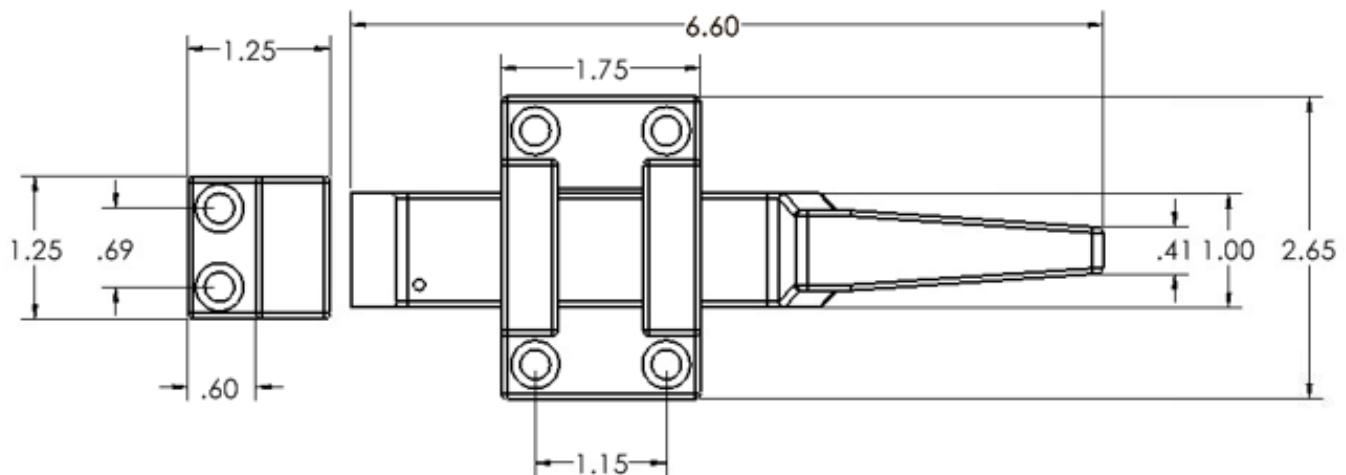


Product Description

- Commercial hands-free bathroom stall latch, reversible for Right and Left side opening
- Standard Duty Commercial application
- Ships with mounting hardware

Advantages:

- Full length lever handle
- Meets ADA requirements



Technical Data

Material	Chrome Plated Zamak and Stainless Steel
Door Thickness	Standard Doors 3/4" to 1.25"

Safety:

- Can withstand 50 pounds of force
- Tested for strength and durability
- Z-bar sloped at an angle to deter objects from being hung on product